



## DIGESTION & EVAPORATION SYSTEMS

**DigiPREP** Block Digestion Systems are uniform heating block systems manufactured with acid resistant materials for long life in corrosive laboratory environments. **DigiPREP** Systems are designed to accept ASTM Class 'A' calibrated, disposable **DigiTUBE** digestion tubes (available in 15 ml, 50 ml or 100 ml sizes) which are manufactured from ICPMS grade plastic. Multiple controller options offer flexibility allowing a user to design an appropriate **DigiPREP** system for a specific need. Unique options such as **DigiPROBE** (a temperature probe which allows the user to monitor and control the system using actual sample

temperature during a digestion) and **DigiSET** (automatic shutoff at a predetermined volume for unattended evaporations) offer the user further control of their process. **DigiPREP** systems are used worldwide for a wide range of applications including food, biological, industrial, agricultural, and environmental digestion applications. The **DigiPREP** HT line of high temperature block digestion systems and Fast Steam Distillation Systems offer a comprehensive solution for the laboratory's sample preparation needs.

**17** Intro on **DigiPREP**

**18** Method Development Guides

**21** **EasyPREP DigiPLATE**

**22** **DigiPREP** Blocks

**23** **DigiPREP** Jr

**24** **DigiPREP** MS

**25** **DigiPREP** LS

**26** **DigiPREP** h

**27** **DigiPREP** HP

**28** **DigiPREP** MINI

**29** **DigiPROBE**

**30** **DigiPREP** Keypad Controller

**31** **DigiPREP** Touch Screen Controller

**32** PC Classic Controller

**33** Go2TEMP Software

**34** **DigiSET**

**35** **DigiVAC**

**36** EPA Filtering Fume Hood

**37** **DigiTUBE**s

**39** **DigiFILTER**s

**40** Vessels and Accessories

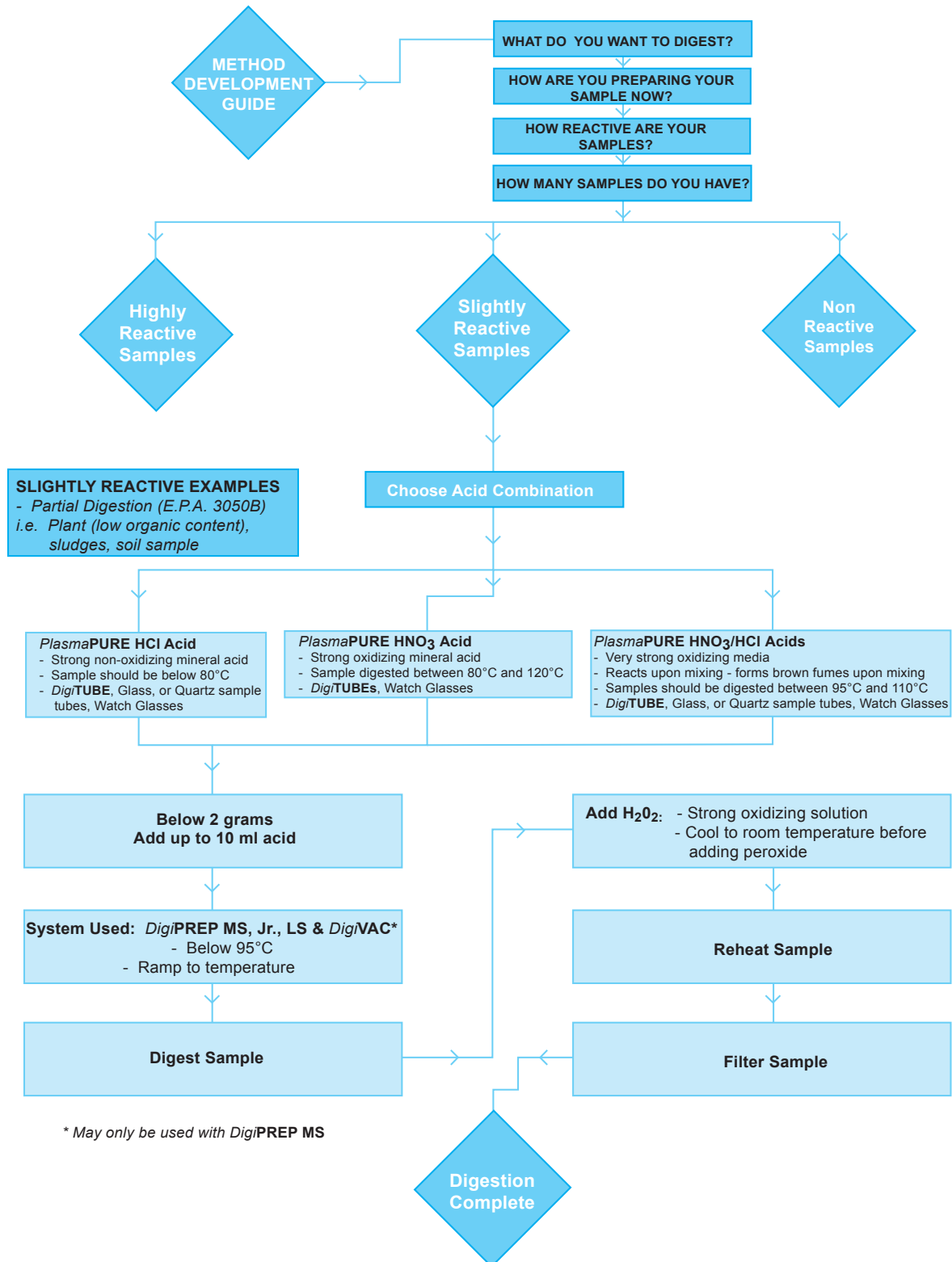
**41** **DigiPREP** HT

**44** **DigiPREP** Chiller

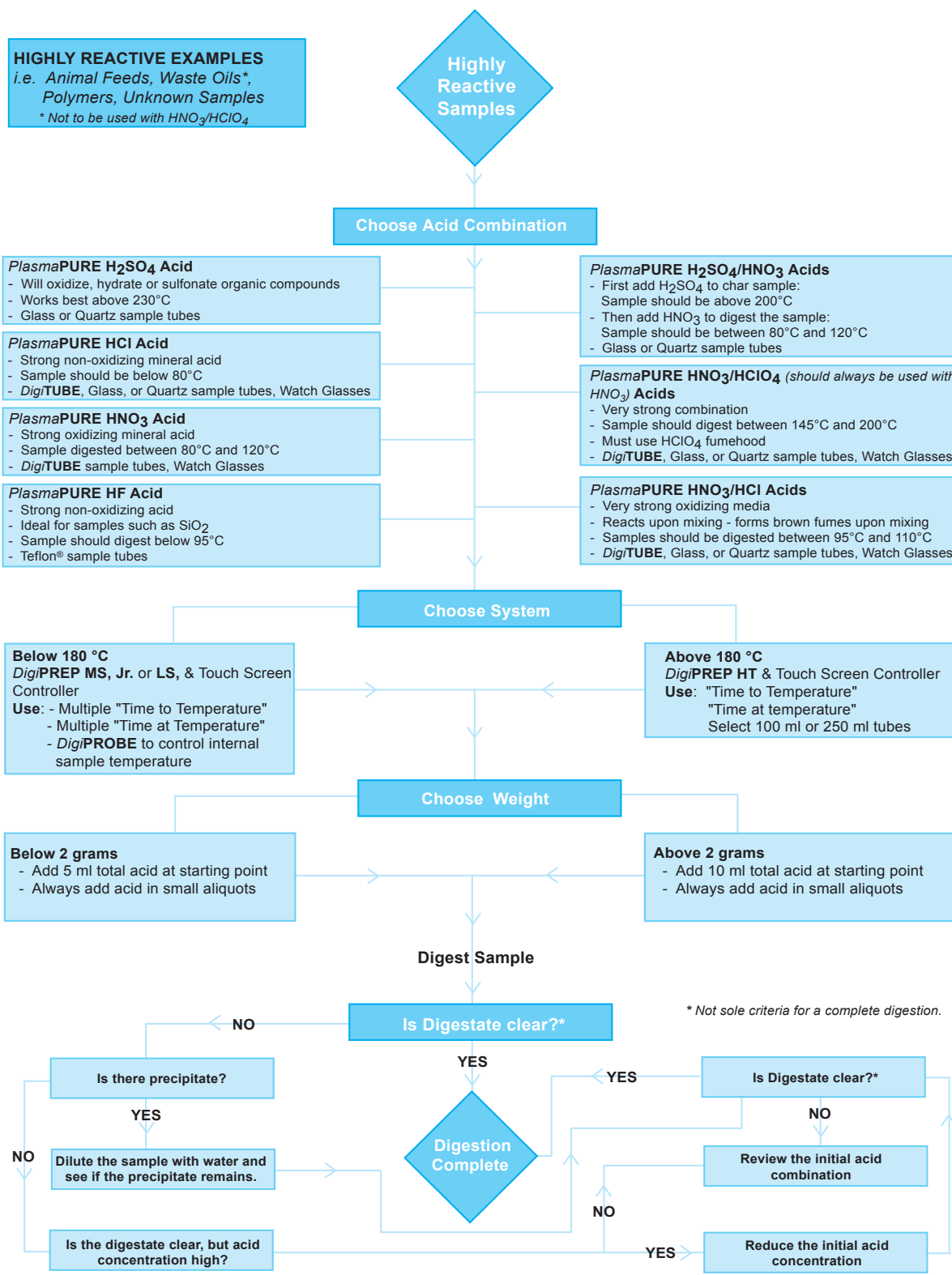
**45** Fast Steam Distillation System

# Method Development Guide

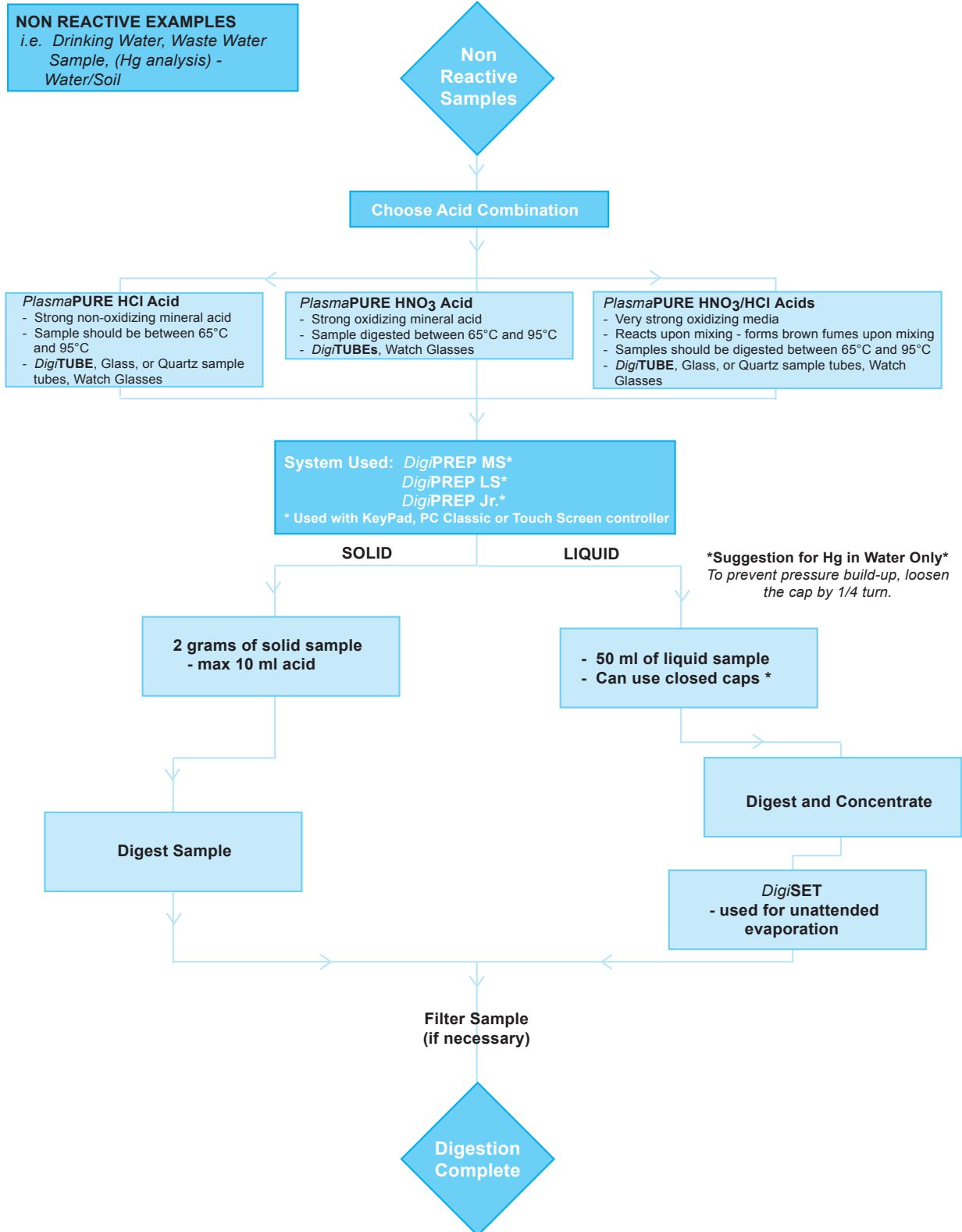
## SLIGHTLY REACTIVE SAMPLES



# Method Development Guide HIGHLY REACTIVE SAMPLES



## Method Development Guide NON REACTIVE SAMPLES





## EasyPREP DigiPLATE

**DigiPLATE** is a 24 x 10 ml Automated Well Plate Digestion System capable of multiple liquid handling operations, digestion, and then filtering small volume samples in a compact, standard well-plate configuration. Digestion with internal exhaust, dispensing and filtration are built into a fully automated system controlled by a stand-alone computer.

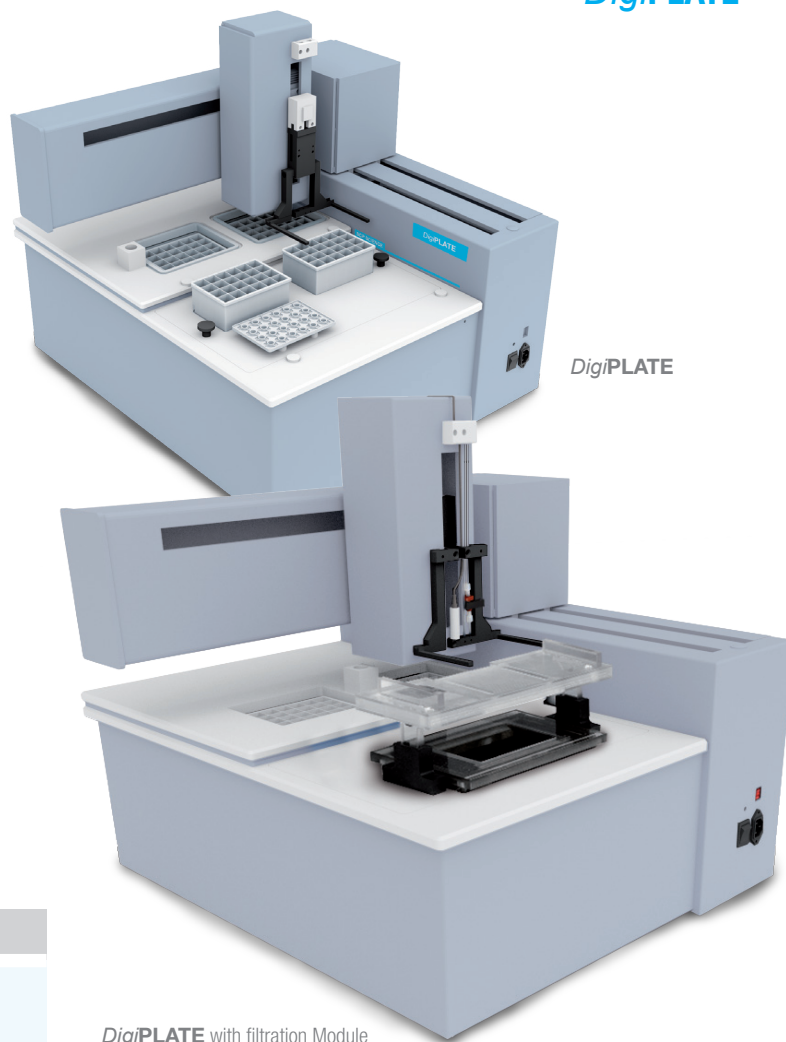
Standard features include the capability to add acids prior to digestion, sample digestion, sample cooling, adding additional reagents and/or internal standard(s), normalizing samples to a fixed volume and aliquoting samples into a second plate. If equipped with an optional Filtration Module, the system will then take final digested samples and filter them simultaneously through a 0.45 or 1.0 micron filtration membrane plate.

With a small sample size, less acid is used, less waste is generated and less corrosive gases are produced. Fumes are easily handled by the internal exhaust system.

**DigiPLATE** heats samples from ambient to 180 °C in less than 10 minutes. Software includes unlimited time to temperature and time at temperature digestion methods, programmed cooling times, ability to store and recall unlimited sample methods, set reagent addition volumes and normalization parameters, set aliquot volumes and filtration times. The software manipulates 24 x 10 ml well-plates through each station (Digestion, Reagent Addition/Cooling and Filtration) allowing for completely unattended operation.

### PC minimum requirements:

Windows® XP, Vista, 7 or 8. Processor 1 GHz or superior, 1GB RAM, HD minimum 1 GB free space and USB port.



DigiPLATE with filtration Module

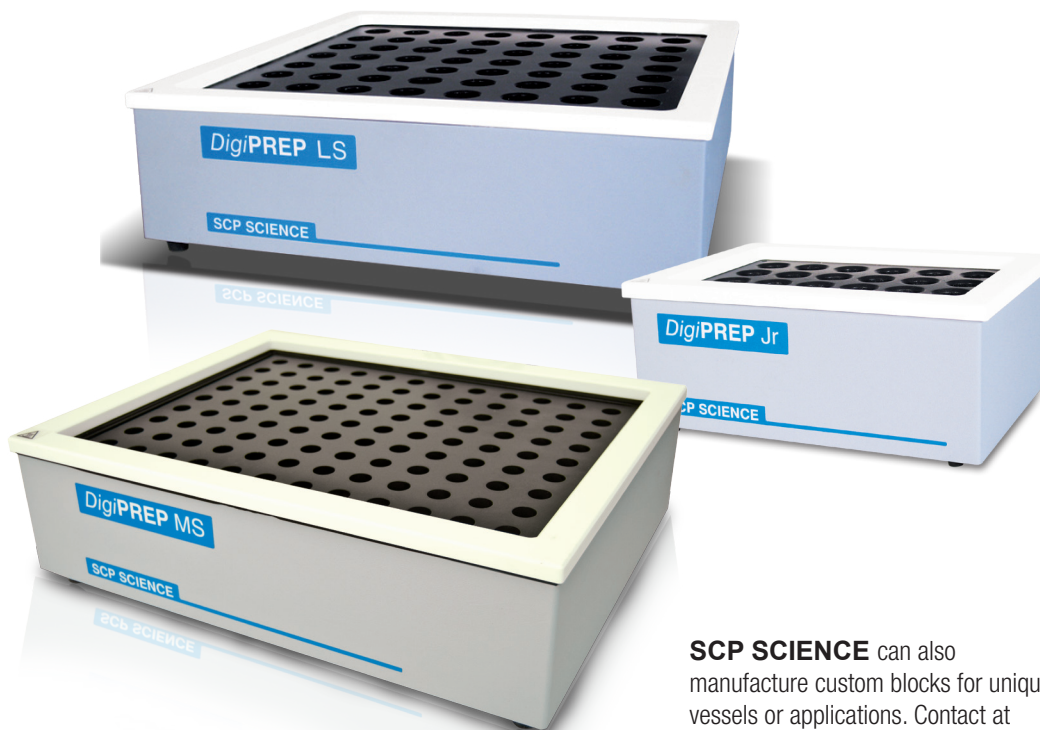
## ORDERING INFORMATION



Description	Qty	Catalog No.
<b>DigiPLATE</b> 110/230V with software	1	010-430-001
Well plate 10 ml, 24 position	12	010-430-010
Watch glass plate	12	010-430-020
Filter plate 0.45 Micron Hydrophilic	6	010-430-030
Filter Module option	1	010-430-003
<b>DigiPLATE</b> with Filtration Module	1	010-430-002
Laptop Computer, for use with <b>EasyPREP DigiPLATE</b>	1	010-400-008

## Digestion & Evaporation Systems

### DigiPREP BLOCKS



**DigiPREP** systems are engineered with machined graphite blocks for optimal heat transfer and are Teflon® coated to resist aggressive corrosive attack for a long life in harsh laboratory environments. They have been designed and built to prevent the migration of acid either through the block or around the top of the block. **DigiPREP** Systems have an integrated spillway around the outside edge of the block to collect solution in the event of an accidental spill.

The graphite, Teflon® coated blocks heat from ambient to 180 °C with a flexible heating mat that covers 99% of the block surface. The heating mat provides exceptional temperature uniformity of +/- 1 °C at 95 °C.

**DigiPREP** blocks are EPA approved and used in Environmental Protection Agency (E.P.A.) Office of Water Methods (i.e. 200.2, 200.7, 200.8, 200.9, 245.1, and 365.1) and Office of Solid Waste SW846 Methods (i.e. 3010a, 3020b, 3050b, and 3060).

**DigiPREP** systems are manufactured under an ISO 9001:2008 certified quality program and factory electrical certification to IEC61010.1 for CE, UL and CSA.

Select 100 ml **DigiPREP** Blocks with **DigiSET** for the methodologies requiring an evaporation step.

**SCP SCIENCE** can also manufacture custom blocks for unique vessels or applications. Contact at [sales@scpscience.com](mailto:sales@scpscience.com).

Three formats of **DigiPREP** Blocks are available:

<b>DigiPREP JR</b>	<b>DigiPREP MS</b>	<b>DigiPREP LS</b>
Designed for low sample loads and research laboratories	Most economical size for busy laboratories	Best for high throughput laboratories

**DigiTUBE** vessel sizes & block capacities:

**DigiPREP Jr**, **DigiPREP MS** and **DigiPREP LS** systems are available for three standard **DigiTUBE** vessel sizes - 15 ml, 50 ml or 100 ml. **DigiPREP** blocks with various capacities are available as follows:

15 ml <b>DigiPREP</b>	50 ml <b>DigiPREP</b>	100 ml <b>DigiPREP</b>
- 40, 108 or 168 positions	- 24, 48 or 72 positions	- 12, 30 or 42 positions

**DigiPREP MINI** and **DigiPREP h** models are also available for unique applications.

## DigiPREP Jr. DIGESTION BLOCK

Select a Controller (see pages 31-32 for more info)



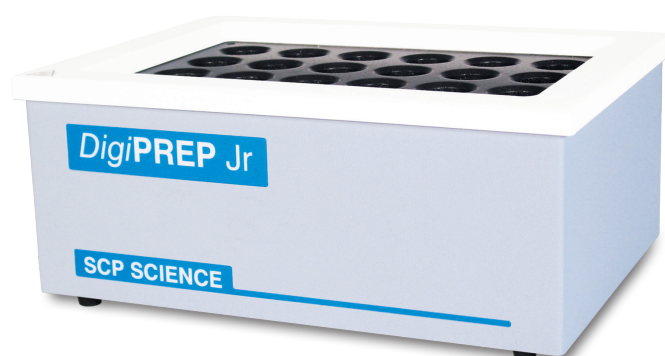
010-500-220  
KeyPad Controller

010-500-250  
Touch Screen  
Controller

010-500-275  
Touch Screen  
Controller w/USB

010-500-280  
PC Classic  
Controller

This convenient size of the *DigiPREP* JR block, with its small footprint, is ideal for labs with limited samples. For a complete system, select an appropriate controller, *DigiPROBE* and Start-Up Kit.



### SPECIFICATIONS



Temperature Range ambient to 180 °C
Power rating: 750 Watts
Size (in./cm) 13/33W x 9.5/24H x 4.75/12D
Weight (lb/kg) 18.5/8.5
Uniformity of block temperature: +/-1 °C (at 95 °C in <i>DigiTUBE</i> s)
Time to Temperature: 25 min. from Ambient to 95 °C
Temperature Stability: +/-0.2 °C
Certification: CE/UL/CSA

### Features

- Built in temperature sensor to control block temperature. For improved accuracy and convenience, select optional *DigiPROBE* (see page 29)
- Acid resistant design for corrosive environments
- Heater covers 99% of block for best temperature uniformity
- Integrated, Over Temperature Protection for added safety

### ORDERING INFORMATION



	40 position 15 ml	24 position 50 ml	12 position 100 ml
Catalog Number	010-515-205	010-505-205	010-501-210
Startup kit	010-515-040	010-505-066	010-501-215
<i>DigiPROBE</i> (with holder)	010-515-115	010-505-115	010-501-115

## DigiPREP MS DIGESTION BLOCK

*DigiPREP* MS is the original *DigiPREP* and it is still the most popular format worldwide. The MS model has been optimized as the most economical choice for standard laboratory throughput. For a complete system, select an appropriate controller, *DigiPROBE* and Startup kit.



### Features

- Spill groove to prevent acid leaking into the heater area
- Built in temperature sensor to control block temperature. For improved accuracy and convenience, select optional *DigiPROBE* ( see page 29)
- Acid resistant construction for corrosive environments
- Heater covers 99% of block for best temperature uniformity

### Select a Controller (see pages 31-32 for more info)



- 010-500-220  
KeyPad Controller
- 010-500-250  
Touch Screen  
Controller
- 010-500-275  
Touch Screen  
Controller w/USB
- 010-500-280  
PC Classic  
Controller



## SPECIFICATIONS

- Temperature Range ambient to 180 °C
- Power rating: 925 Watts
- Size (in./cm) 46/46W x 36/36H x 12/12D
- Weight (lb/kg) 53/24
- Uniformity of block temperature: +/-1 °C  
(at 95 °C in 50 ml *DigiTUBE*s)
- Time to Temperature: 35 min. from Ambient to 95 °C
- Temperature Stability: +/-0.2 °C
- Certification: CE/UL/CSA



## ORDERING INFORMATION

	108 position 15 ml	48 position 50 ml	30 position 100 ml
Catalog Number	010-515-210	010-500-205	010-501-230
Startup kit	010-515-108	010-500-067	010-501-235
<i>DigiPROBE</i> (with holder)	010-515-115	010-505-115	010-501-115

## DigiPREP LS DIGESTION BLOCK

### Select a Controller (see pages 31-32 for more info)



010-500-220  
KeyPad Controller

010-500-250  
Touch Screen  
Controller

010-500-275  
Touch Screen  
Controller w/USB

010-500-280  
PC Classic  
Controller

*DigiPREP* LS blocks are best for high throughput laboratories. For a complete system, select an appropriate controller, *DigiPROBE* and Startup kit.



### Features

Built in temperature sensor to control block temperature. For improved accuracy and convenience, select optional *DigiPROBE* (see page 29)

Conveniently sized to fit into a standard fume hood

Acid resistant construction, designed for corrosive environments

Heater covers 99% of block for best temperature uniformity

### NOTE



Available as 230 Volt AC only.

## ORDERING INFORMATION



	168 position 15 ml	72 position 50 ml	42 position 100 ml
Catalog Number	010-515-220	010-500-210	010-501-250
Startup kit	010-515-110	010-500-069	010-501-255
<i>DigiPROBE</i> (with holder)	010-515-115	010-505-115	010-501-115



## DigiPREP h DIGESTION BLOCK



**DigiPREP h** is a Teflon® coated, graphite block with an integrated Keypad controller. Its small bench top footprint saves valuable space while it's uniform sample heating guarantees steady temperature during sample digestion. Comes complete with RackLock Transfer Rack for **DigiTUBE**s, a sample pack of **DigiTUBE**s, caps and watch glasses.

### Features

Uniform block temperature +/-1 °C

Digest by sample temperature with **DigiPROBE**

**DigiPROBE** can be calibrated

Operates in 7 languages: English, French, German, Italian, Spanish, Dutch and Japanese



## SPECIFICATIONS

Temperature Range	Ambient to 180 °C
Power Rating	750 Watts (230V)
Size (in./cm)	20.5L x 5.5H x 9.5D / 52.1L x 14H x 24.1D
Weight (lb/kg)	24/11
Certification	CE/UL/CSA



## ACCESSORIES

<b>DigiPREP h</b>	<b>010-515-212</b>	<b>010-505-212</b>	<b>010-501-212</b>
Description	40 position 15 ml	24 position 50 ml	12 position 100 ml
Startup kit	010-515-040	010-505-066	010-501-215
<b>DigiPROBE</b> (with holder)	010-515-115	010-505-115	010-501-115
Watch glasses	010-515-081	010-500-081	010-501-081
RackLock <b>DigiTUBE</b> s	010-515-261	010-500-261	010-501-261
Storage racks (5)	010-515-030	010-500-026	010-501-028
<b>DigiPROBE</b> holder	010-515-036	010-500-035	010-501-010
RackLock Racks	010-515-023	010-505-021	010-501-510



## DigiPREP HP HOT PLATE

### Select a Controller (see pages 31-32 for more info)



010-500-220  
KeyPad Controller

010-500-250  
Touch Screen  
Controller

010-500-275  
Touch Screen  
Controller w/USB

010-500-280  
PC Classic  
Controller

### Features

Corrosion resistant - Constructed for long life

Works with **DigiPROBE** (010-505-041)

Built in temperature sensor to control block temperature. For improved accuracy and convenience, select optional **DigiPROBE** (see page 29)

Heater covers 99% of block for best temperature uniformity

**DigiPREP** HP has solved the problem of “hot spots” due to localized heat sources with traditional hot plates. This is achieved through a heating mat which covers the entire bottom of the Teflon® coated graphite plate. The graphite plate offers corrosion resistance and superior thermal conductivity compared to conventional hot plate surfaces and has a  $\pm 1$  °C variation across its surface. Direct sample heating can be monitored and controlled by a Teflon® coated, thermocouple probe (**DigiPROBE**, optional, see page 29) placed in a control sample or in the well located in the graphite plate. **DigiPREP** HP operates with the KeyPad, PC Classic or Touch Screen controller (sold separately) and is CE, UL, and CSA approved.



Name	Catalog No.
<b>DigiPREP</b> HP	010-505-230

## ORDERING INFORMATION



Name	Size	Catalog No.
Beaker, PTFE, 100 ml	69 x 59 mm	130-013-001
Beaker, PTFE, 250 ml	97 x 66 mm	130-013-002
Beaker, PTFE, 500 ml	106 x 80 mm	130-013-003
Watchglass, PTFE, 100 ml	75 mm	130-013-011
Watchglass, PTFE, 250 ml	80 mm	130-013-012
Watchglass, PTFE, 500 ml	100 mm	130-013-013

## Accessories Teflon® BEAKERS & WATCHGLASSES

Molded from pure PTFE, with a super smooth internal finish and pouring spout, Teflon® Beakers are essential in any trace metal laboratory. These beakers are designed for use up to 280 °C and/or with HF for silicate and refractory mineral digestion. They are constructed with flat bottoms providing better contact with hot plate surfaces and thus better thermal transfer efficiency.



## DigiPREP MINI DIGESTION BLOCK



**DigiPREP** MINI is self-contained, Teflon® coated, graphite block digestion system with built in controller for labs with extremely low sample throughput. Comes with 3 pre programmed methods and allows for 2 user defined methods for set point temperature and time at temperature. **DigiPREP** MINI is not compatible with the **DigiPROBE** or **DigiSET** accessories.

### Features

Electronics are isolated from the heating area to prevent premature electronic failure.

Acid resistant construction for corrosive environments



## ORDERING INFORMATION

Description	Catalog Number
25 position 15 ml (115V)	010-510-515
25 position 15 ml (230V)	010-510-235
9 position 50 ml (115V)	010-510-010
9 position 50 ml (230V)	010-510-015

## NOTE

**DigiPREP** MINI has a built in Temperature Controller

see pages 37-40  
FOR COMPATIBLE  
*DigiTUBE*s,  
WATCH GLASSES,  
*DigiFILTER*s AND OTHER  
ACCESSORIES FOR USE  
WITH *DigiPREP* MINI

## DigiPREP Accessories

### DigiPROBE

**DigiPROBE** is a PFA coated, temperature sensor which provides direct control and monitoring of the actual sample temperature during a digestion.

During digestion or evaporation, sample temperature and block temperature are offset. Since standard temperature control is through the block temperature sensor, graphite block users must calibrate the offset to obtain a suitable control temperature to arrive at a specific sample temperature. **DigiPROBE** provides direct sample temperature feedback to the controller which will then adjust the temperature of **DigiPREP** block on a continuous basis to arrive at the requisite sample temperature.

Features
Probe and wiring is Teflon® coated for acid compatibility
Connects to the all blocks (except <b>DigiPREP</b> MINI)
Can be calibrated on Keypad and Touch Screen controllers

### ORDERING INFORMATION

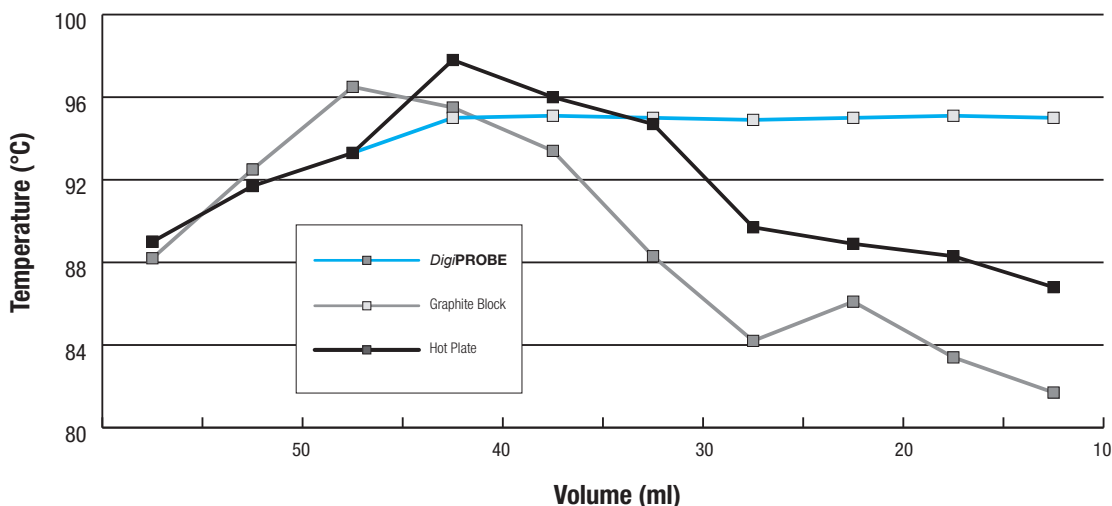
Description	Qty	Catalog No.
<b>DigiPROBE</b> for 15 ml <b>DigiTUBE</b>	1	010-515-115
<b>DigiPROBE</b> for 50 ml <b>DigiTUBE</b>	1	010-505-115
<b>DigiPROBE</b> for 100 ml <b>DigiTUBE</b>	1	010-501-115
<b>DigiPROBE</b> Tube, <b>DigiPROBE</b> tube, is a Pyrex sheath placed over the tip of the <b>DigiPROBE</b> . Used during sample digestion as protection against cross contamination from multiple sample rack batches. Acts as a barrier between high concentrated acidified samples and the <b>DigiPROBE</b> ; extends the life of the <b>DigiPROBE</b> .	1	010-500-032



**DigiPROBE**s are supplied with acid resistant **DigiPROBE** holders to support and position the **DigiPROBE** in the tube. **DigiPROBE**s are serialized for traceability.

Sample Temperature vs Sample Volume During Evaporation

(**DigiPREP** system's "Target Temperature" is set to 95 °C)



## DigiPREP KeyPad CONTROLLER

### CONTROLLERS

*DigiPREP* KeyPad, Touch Screen and PC Classic controllers are used with *DigiPREP* digestion systems. Each controller has a programmable temperature set-point to 0.1 °C and shut down timer (in minutes). KeyPad and Touch Screen controllers have an alarm for the end of the timed segment.

All controllers are manufactured using the same corrosion resistant material as the *DigiPREP* blocks to eliminate sample contamination and provide long, corrosion-free life. Manufactured under an ISO 9001:2000 certified quality program. CE, UL, and CSA approved.



Recommended for simpler methods where a single set point temperature is required. Display shows current block temperature (or sample temperature if used with *DigiPROBE*) along with current time remaining for the digestion. Built-in audible and visual alarms signal the end of a segment. User friendly, one-touch buttons allow for fast resetting of temperature or alarm times.

#### Features

Temperature Set-Point Programming to 0.1 °C

Block sensor or *DigiPROBE* can be calibrated with up to 5 points

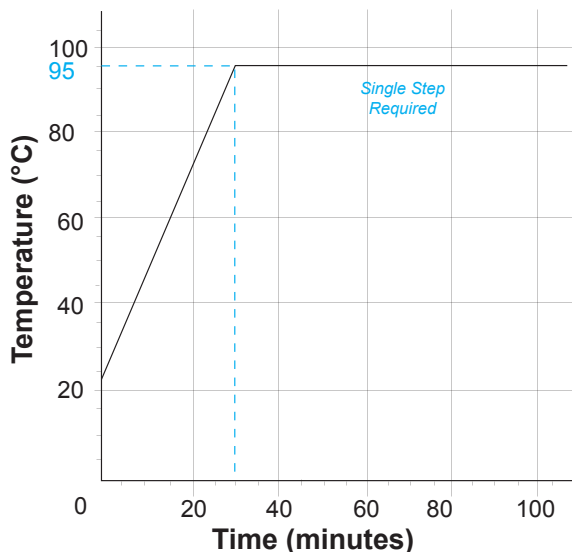
7 languages included: English, French, German, Italian, Spanish, Dutch and Japanese



### SPECIFICATIONS

Catalog Number	010-500-220
Power	85-240V
Size (in./cm)	5.5W x 7.25D x 4.25H / 14W x 43.8D x 10.2H
Weight (lb/kg)	2.6 / 1.5
Certification	CE/UL/CSA

Typical KeyPad Controller Program for Drinking Water



## DigiPREP Touch Screen CONTROLLER

Recommended for applications with reactive samples that require better control of heat input. Ideal to control frothing or boil-over in samples high in organic matter (soil, sludge, feed, food, etc.).

The Touch Screen Controller (TSC) with a color display allows the user to program up to 3 sets of 'Time to Temperature' and 'Time at Temperature' steps in a temperature profile. Save and store up to 12 user-defined methods. The Touch Screen Controller USB Option allows users to transfer completed digestion data (including serial number with date and time stamp) to a connected USB stick.



### Features

Allows for block temperature feed back or sample temperature feed back using an optional **DigiPROBE**

Automatic shut off at end of run

Real time graphical representation of heating progress

Displays temperature to 0.1 °C

Displays time to 0.1 sec.

10 languages included: English, French, German, Dutch, Italian, Portuguese, Spanish, Japanese, Chinese, Korean

### ORDERING INFORMATION



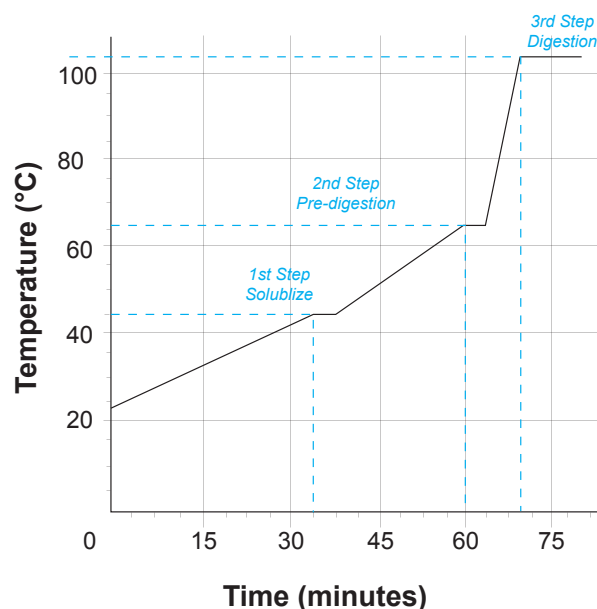
Description	Qty	Catalog No.
Touch Screen Controller	1	010-500-250
Touch Screen Controller, with USB	1	010-500-275

### SPECIFICATIONS



Power	85-240V, 15A
Size (in/cm)	10W x 7.5D x 7H / 25W x 18D x 17.5H
Weight (lb/kg)	5.5/2.5
Certification	CE/UL/CSA

TKN Touch Screen Controller Program for Animal Feed



## PC Classic CONTROLLER



### NOTE

Works with all blocks

Communication with Go2Temp software

The PC Classic Controller and Go2Temp software allow a user to control one or multiple **DigiPREP** blocks remotely. Access to advanced software features of the Go2Temp is provided. Comes complete with communication capabilities (RS485 to USB).

### Features

Connect up to eight **DigiPREP** systems to a PC data station  
 - Save set-up time for multiple application methods

Can be used as a stand alone controller with temperature displayed to 0.1 °C

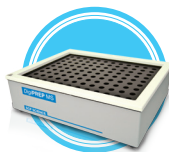
### SPECIFICATIONS

Catalog Number	010-500-280
Power	80-240V
Size (in./cm)	7W x 6D x 8H / 17.8W x 15.2D x 20.3H
Weight (lb/kg)	15 / 6.8
Certification	CE/UL/CSA

## DigiPREP CONTROLLERS ARE FOR USE WITH THE FOLLOWING BLOCK FORMATS



DigiPREP Jr.



DigiPREP MS



DigiPREP LS



DigiPREP HT



DigiPREP HP



## PC Classic Go2Temp® TEMPERATURE CONTROL SOFTWARE

### Features

Generate reports containing graphical representation and realized temperature of the application method - Ideal for audit purposes

Define four different user levels (Normal, Super, Systems Administration & Service Engineer) - Provide added security to important information

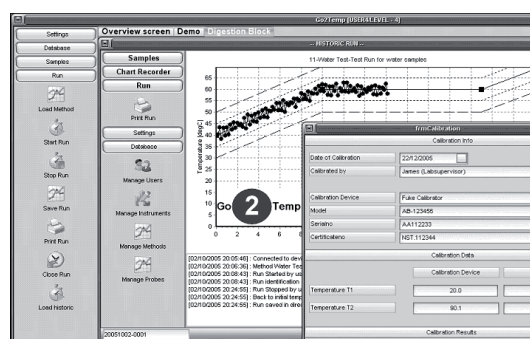
Connect up to 8 blocks to one computer.  
(Each block requires its own PC Classic controller)

### PC minimum requirements:

Windows® 2000/XP, Minimum Pentium/900 MHz, 256 MB RAM, 1024 x 768 pixels, 64K colors (16 Bit - High Color) and USB port.

Software is tested up to Windows 7/8, 32 and 64 Bits

Install Go2Temp® software on your desktop to simultaneously control up to eight **DigiPREP** systems. Fully database driven; one can input temperature methods and instrument settings to facilitate multiple **DigiPREP** digestions systems or evaporations simultaneously. Requires at least one **DigiPREP** digestion block and one **DigiPREP** PC Classic controller for each block.



Each Go2Temp® run is saved on the hard disk or LIMS and contains a full temperature profile, alarms and log files (i.e. limit violations, start/stop info, errors and user names). Ideal for audit trailing. Information may be stored in Microsoft® Excel, XML or Acrobat PDF formats.

## SPECIFICATIONS

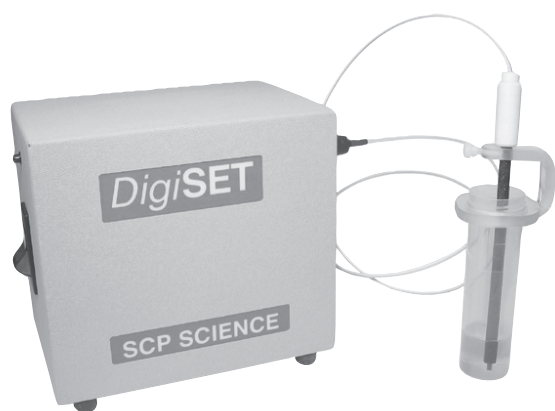


Name	Description	Includes	Catalog No.
Go2Temp®-L1	Software to control up to 8 <b>DigiPREP</b> heating systems	USB to RS485 converter Software key 25' communication cable	010-500-185
Go2Temp®-Lx	2 <sup>nd</sup> to 8 <sup>th</sup> add on	25' communication cable Splitter cable for 1 <sup>st</sup> controller	010-500-186
Go2Temp® -Au	License for electronic signature	Password key to activate	010-500-187
Go2Temp®-IM	License to Import sample list form LIMS or external drive	Password key to activate	010-500-188
Go2Temp®-SC	License to turn the system on at predefined time	Password Key to activate	010-500-189
Go2Temp®-SU	3 years' Service Support via the internet	Free software updates	010-500-190

## DigiPREP Accessories

### AUTOMATIC SHUT-OFF SYSTEM - *DigiSET*

Designed to shut off *DigiPREP* heating systems once a predetermined volume of sample is reached in a *DigiTUBE*. Combining a visual alarm with auto shut-off, *DigiSET* offers a level of sample preparation control not available with any other graphite



block digestion system. *DigiSET* is designed for evaporation methods where samples require volume reduction (volume control  $\pm 2.5$  ml). Manufactured under an ISO 9001:2000 certified quality program. CE, UL and CSA approved.

#### Features

Automatic shut-off of *DigiPREP* system with no lab supervision  
 · Allows for overnight digestions and evaporations · Increase lab efficiency by automatically processing samples off-hours

Manufactured with a corrosion resistant case · Eliminates sample contamination from instrument · Corrosion resistant for long life



#### NOTE

For best evaporation efficiency, choose *DigiPREP* Graphite Block systems for 100 ml volumes.



## ORDERING INFORMATION

Description	Qty	Catalog No.
<i>DigiSET</i> (85V to 240V)	1	010-500-014
<i>DigiSET</i> Probe Holder, 50 ml	1	010-500-036
<i>DigiSET</i> Probe Holder, 100 ml	1	010-501-020
<i>DigiSET</i> Probe for use with 50 / 100 ml <i>DigiTUBE</i> s	1	010-500-037
<i>DigiSET</i> Probe for use with <i>DigiVAC</i>	1	010-500-058
Dongle for <i>DigiSET</i> Port (2 pin female)	1	010-500-051
Dongle for <i>DigiPROBE</i> Port (4 pin male)	1	010-505-052

## DigiPREP Accessories DigiVAC



### Features

Liberates fume hood space

Evacuates fumes uniformly with no sample cross contamination

Supplied with 50 ml *DigiVAC* racks. Racks for 15 ml and 100 ml are also available (order separately)

### ORDERING INFORMATION



Description	Qty	Catalog No.
<i>DigiVAC</i> Hood, Corian Ring & 2 <i>DigiVAC</i> Racks, 24 position, 50 ml	1	010-500-031
<i>DigiVAC</i> Blower System (115V/230V), 3 ft. exhaust hose w/90° elbow to connect hood & blower unit, 6 ft. Exhaust hose to connect blower unit to fume hood or fume duct, 6 ft.	1	010-500-033
Rack, 15 Position for <i>DigiVAC</i> (100 ml)	1	010-501-027
Rack 54 Position for <i>DigiVAC</i> (15 ml)	1	010-515-020
<i>DigiVAC</i> Exhaust Hose, 10 feet, extra	1	010-500-034

The *DigiVAC* Hood is ideal for labs with limited fume hood space by allowing bench top digestions. It is a lower cost alternative to the use of a traditional fume hood for metal digestions and perfect for mobile environmental laboratories. Manufactured with three distinct “airfoils” to direct air flow patterns ensuring constant volume reduction during evaporation with no cross contamination. The system is installed by replacing the standard Corian® ring with the pre-assembled *DigiVAC* Housing. Comes complete with a clear Lexan® hood which covers the graphite block and unique digestion racks for a *DigiPREP* MS system. The *DigiVAC* is designed with uniform fume removal to ensure consistent evaporation across the block. Air is drawn through the system using the *DigiVAC* Blower unit or the Universal Fume Scrubber (catalog no. 010-520-160. See page 44).

The withdrawal of acid fumes is facilitated by use of *DigiVAC* Blower an optional, variable speed blower unit (catalog no. 010-500-033). Comes complete with an acid resistant hose to connect the variable speed blower unit to the *DigiVAC* hood; and a second length hose to connect the blower to a fume duct or fume hood.

### NOTE



*DigiVAC* is used with *DigiPREP* MS blocks only



## DigiPREP Accessories

### EPA (EFFICIENCY PARTICULATE ARRESTANCE) FILTERING FUME HOOD SYSTEM

To eliminate airborne trace metal contamination from the lab environment or from corroding fume hoods, the **DigiPREP** Fume Hood is the right choice. The **DigiPREP** Fume Hood is an ergonomic, bench-top fume hood designed for **DigiPREP** Block Digestion Systems or auto samplers. Basic assembly with no tools or screws required; comes complete with its own base. Lab air

is drawn through EPA filters on the sides of the hood to prevent impinging air from cooling samples as they digest on a **DigiPREP** block. **DigiPREP** Fume Hoods are made from clear, acid resistant Polycarbonate sides and doors. Side panels have sealable ports to facilitate passage of cables or wires. The 'roll back' style door is hinge-free and slides up inside the fume hood easily with one hand.



#### Features

Filter air through EPA filter cartridge for cleaner air flow

Integrated "roll back" door - Slides effortlessly for easy access

Constructed from Lexan® - Provides durable and see-through construction



## ORDERING INFORMATION

Description	Qty	Catalog No.
Fume Hood, for <b>DigiPREP</b> Jr or MS; Size in/cm: 26W x 23.5D x 20H (66 x 60 x 51)	1	010-500-039
Fume Hood *, for Autosamplers; Size in/cm: 26W x 23.5D x 20H (66 x 60 x 63.5)	1	010-500-049
Fume Hood, for <b>DigiPREP</b> LS; Size in/cm: 26W x 23.5D x 20H (66 x 71 x 51)	1	010-500-059
Fume Hood *, for <b>EasyPREP</b> Sample Handler, <b>TitreC</b> and <b>DigiPLATE</b> ; Size in/cm: 43W x 33D x 36H (109 x 84 x 91)	1	010-400-094
EPA Filter cartridge box with Filter Cartridge, to retrofit older style round filter holders	1	010-500-050
Replacement EPA Filter Cartridge (2pc)	1	010-500-057
Blower System (Blower System includes 3' of exhaust hose and 90 degree elbow to connect Fume Hood and Blower Unit. Also includes 6' of exhaust hose to connect blower fume duct. See page 35)	1	010-500-033

\* Not exactly as shown.

## DigiPREP Accessories

### DigiTUBES

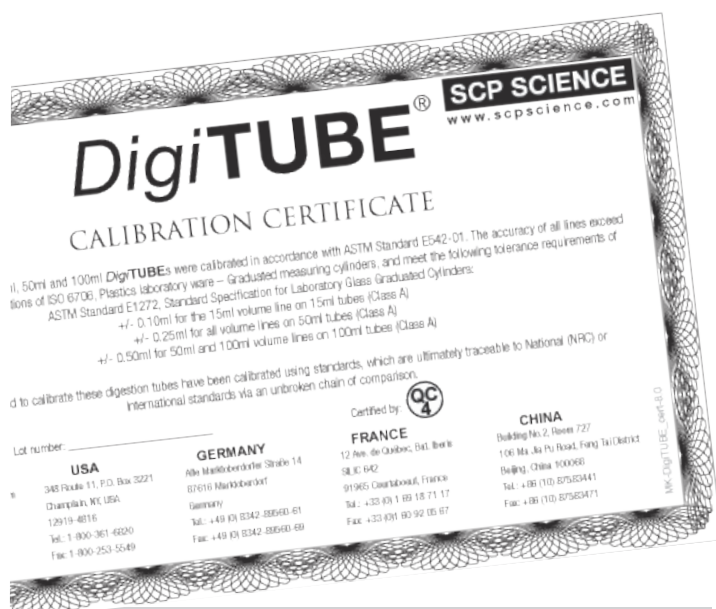
**DigiTUBES** are universally recognized as the best disposable digestion vessels in the world. **DigiTUBES** are manufactured using virgin, ICPMS grade polypropylene with ultra-low trace metal content. The major graduation marks on the 15 ml, 50 ml and 100 ml tubes are certified to ASTM Class 'A' specifications for accurate dilution and normalization directly in the digestion vessel. This eliminates the need for separate graduated cylinders or volumetric flasks. **DigiTUBES** are designed with leak-free, single-threaded screw cap closures and ridge-less, flat bottoms providing intimate contact with the base of a **DigiPREP** block digestion system for optimal heat transfer.

Users of the **DigiPREP** Block Digestion Systems benefit from the unique RackLock **DigiTUBE** design which locks the tubes in digestion racks, preventing them from spinning, allowing for easy

one-handed closure of the screw cap.

Also available are **HandyPAK** and **HandyPAK Plus** packaging options to eliminate potential contamination or dust infiltration when storing **DigiTUBES** in the laboratory. The **HandyPAK** packaging format has smaller quantities of shrink wrapped **DigiTUBES**. Caps are supplied in separate bulk bags. The **HandyPAK Plus** format has pre-capped **DigiTUBES** placed in storage racks and then shrink-wrapped.

Use disposable watch glasses for 50 ml and 100 ml **DigiTUBES** to promote refluxing during digestions or to cover samples to minimize contamination from the environment. Watch glasses are manufactured from the same ultra-low trace metal, ICP-MS grade polypropylene as **DigiTUBES**.



### Features

Made from specially selected virgin polypropylene with ultra low leachable metal content

Provides nominal graduation marks with accuracy equal to ASTM Class "A" specifications. Eliminates the need for graduated cylinders and volumetric flasks. Certificate included with each case

Triple contact sealing surfaces between **DigiTUBE** and Cap guarantee a leak proof closure.





## DigiPREP Accessories

### DigiTUBEs



## SPECIFICATIONS

Description	Qty	Catalog No.
<b>50 ml DigiTUBEs &amp; Watch Glasses</b>		
50 ml RackLock <b>DigiTUBE</b> s with blue caps	750	010-500-261
50 ml non RackLock <b>DigiTUBE</b> s with blue caps	750	010-500-263
50 ml RackLock <b>DigiTUBE</b> s without caps	750	010-500-262
50 ml non RackLock <b>DigiTUBE</b> s without caps	750	010-500-264
Blue Screw Cap for 50 ml <b>DigiTUBE</b>	250	010-500-060
Clear Screw Cap for 50 ml <b>DigiTUBE</b>	250	010-500-172
Orange Screw Cap for 50 ml <b>DigiTUBE</b>	250	010-500-140
Red Screw Cap for 50 ml <b>DigiTUBE</b>	250	010-500-150
Yellow Screw Cap for 50 ml <b>DigiTUBE</b>	250	010-500-130
50 ml RackLock <b>DigiTUBE</b> with blue caps, <b>HandyPAK</b> Format	750	010-500-362
50 ml non RackLock <b>DigiTUBE</b> with blue caps, <b>HandyPAK</b> Format	750	010-500-364
50 ml RackLock <b>DigiTUBE</b> with clear caps, <b>HandyPAK</b> Format	750	010-500-366
50 ml RackLock <b>DigiTUBE</b> with blue caps, <b>HandyPAK Plus</b> Format	480	010-500-461
50 ml non RackLock <b>DigiTUBE</b> and blue caps, <b>HandyPAK Plus</b> Format	480	010-500-463
50 ml Disposable Watch Glass with handle	1000	010-500-081
<b>100 ml DigiTUBEs &amp; Watch Glasses</b>		
100 ml RackLock <b>DigiTUBE</b> s with blue caps	300	010-501-261
100 ml non RackLock <b>DigiTUBE</b> s with blue caps	300	010-501-263
100 ml RackLock <b>DigiTUBE</b> s without caps	300	010-501-262
100 ml non RackLock <b>DigiTUBE</b> s without caps	300	010-501-264
100 ml RackLock <b>DigiTUBE</b> with blue caps, <b>HandyPAK</b> Format	300	010-501-362
100 ml non RackLock <b>DigiTUBE</b> with blue caps, <b>HandyPAK</b> Format	300	010-501-364

Description	Qty	Catalog No.
100 ml RackLock <b>DigiTUBE</b> with blue caps, <b>HandyPAK Plus</b> Format	288	010-501-462
100 ml non RackLock <b>DigiTUBE</b> with blue caps, <b>HandyPAK Plus</b> Format	288	010-501-464
Blue Screw Cap for 100 ml <b>DigiTUBE</b>	100	010-501-060
Clear Screw Cap for 100 ml <b>DigiTUBE</b>	100	010-501-172
100 ml Disposable Watch Glasses with Handle Post	500	010-501-081
<b>15 ml DigiTUBEs &amp; Watch Glasses</b>		
Blue Screw Cap for 15 ml <b>DigiTUBE</b>	540	010-515-060
Clear Screw Cap for 15 ml <b>DigiTUBE</b>	540	010-515-172
15 ml RackLock <b>DigiTUBE</b> s without caps	1620	010-515-262
15 ml non RackLock <b>DigiTUBE</b> s with caps	1620	010-515-263
15 ml non RackLock <b>DigiTUBE</b> s without caps	1620	010-515-264
15 ml RackLock <b>DigiTUBE</b> s with caps	540	010-515-361
15 ml non RackLock <b>DigiTUBE</b> s with caps	540	010-515-363
<b>Teflon® &amp; Glass Digestion Tubes</b>		
Teflon® Digestion Tube, 50 ml (pk/6)	1	010-500-066
Teflon® Screw Cap, 50 ml Teflon® Tube(pk/6)	1	010-500-166
Teflon® Digestion Tube, 100 ml, (pk/6)	1	010-501-084
Borosilicate Glass Tube 50 ml Flat Bottom, cal. at 10, 25, 30 and 50 ml (pk/6)	1	010-500-071
Borosilicate Glass Tube 50 ml, Uncalibrated (pk/6)	1	010-500-077
Borosilicate Digestion Tube, 100 ml Format, cal. at 25 and 50 ml	1	010-501-039
Borosilicate Digestion Tube, 50 ml, Cal. at 25 ml (pk/6)	1	010-500-076

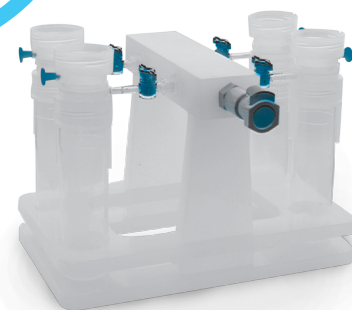


## DigiPREP Accessories

### DigiFILTERs

The **DigiFILTER** is a fast, clean and easy way to filter samples for ICP, ICPMS or AA applications. When used in conjunction with the unique **DigiFILTER** manifold and any vacuum source, multiple filtrations can be performed simultaneously. **DigiFILTERs** are used in conjunction with two **DigiTUBEs** - one containing the digested sample and a clean empty **DigiTUBE** for the filtered sample.

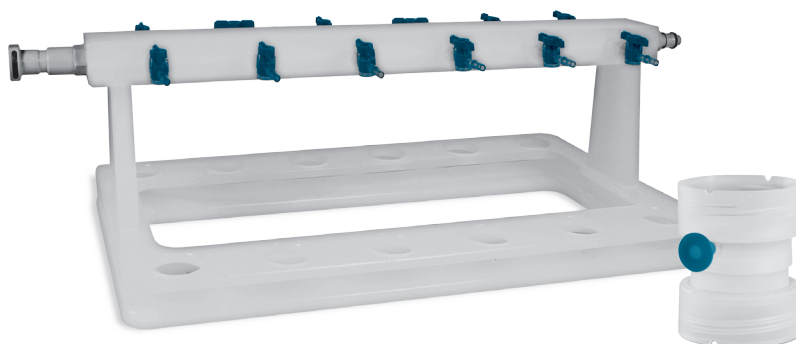
Filters are manufacture from ICPMS grade plastic and virgin hydrophilic Teflon® or Glass Fiber filter membranes to ensure non contamination of samples.



#### Accessories



010-500-235  
Vacuum Pump



## ORDERING INFORMATION



Description	Qty	Catalog No.
0.45 micron Hydrophilic Teflon®, 50 ml format	100	010-500-070
1.0 micron Hydrophilic Teflon®, 50 ml format	100	010-500-080
0.7 micron glass fiber for TCLP, 50 ml format	100	010-500-082
0.45 micron HP Hydrophilic Teflon®, 50 ml format	100	010-500-370
0.45 Micron Hydrophilic Teflon®, 100 ml format	50	010-501-070
1.0 micron Hydrophilic Teflon® 100 ml format	50	010-501-080
12 place manifold 50 ml format	1	010-500-230
4 place manifold 50 ml format	1	010-500-234
8 place manifold 100 ml format	1	010-501-238

Description	Qty	Catalog No.
Vacuum pump (115V) 20 L	1	010-500-235
Vacuum pump (115V) 60 L	1	010-500-237
Vacuum pump (230V) 58 L	1	010-500-239
Vacuum pump (230V) 17 L	1	010-790-509
Teflon® lined Vacuum Pump (115V) 20 L	1	010-790-530
Teflon® lined Vacuum Pump (230V) 58 L	1	010-790-531
Field Filtration Kit, 0.45 micron filters *	1	010-500-170
0.7 micron glass fiber for TCLP, 100 ml Format	50	010-501-082

\* Kit contains: 25 x 0.45 micron filters, 30 x 50 ml **DigiTUBEs** with Caps, Syringe to assist in filtration, permanent marking pen, 1:1 **PlasmaPURE** HNO<sub>3</sub> acid to acidify sample, and a storage rack.

## DigiPREP Digestion VESSELS AND ACCESSORIES



### Storage Racks for DigiTUBEs

After analysis, retain the digested samples using convenient storage racks. Racks hold up to 24 *DigiTUBE*s and may be stacked to save bench space.

Description	Qty	Catalog No.
Recycled plastic Storage Rack, 50 ml <i>DigiTUBE</i>	5/pk	010-500-026
Foam Storage Rack, 50 ml <i>DigiTUBE</i>	5/pk	010-500-028
Foam Storage Rack, 100 ml <i>DigiTUBE</i>	5/pk	010-501-028
Foam Storage Rack, 15 ml <i>DigiTUBE</i>	5/pk	010-515-030

### DigiTUBE Racks

Facilitate the handling of samples with *DigiTUBE* digestion racks. Racks are made from Lexan® and are acid and heat resistant. Exclusive RackLock feature locks tubes in position within rack allowing for easy, one-handed closure of screw cap.

Description	Qty	Catalog No.
Rack, 24 position, RackLock for <i>DigiPREP</i> Jr. (50 ml)	1	010-505-021
Rack, 24 position, RackLock for <i>DigiPREP</i> MS & LS (50 ml)	1	010-500-021
Rack, 18 position, RackLock for HotBlock® (50 ml)	1	010-500-025
Rack, 12 Position, RackLock for <i>DigiPREP</i> Jr (100 ml)	1	010-501-510
Rack, 15 Position, RackLock for <i>DigiPREP</i> MS (100 ml)	1	010-501-530
Rack, 21 Position, RackLock for <i>DigiPREP</i> LS (100 ml)	1	010-501-550
Rack, 24 Position, RackLock for <i>DigiPREP</i> Jr (50 ml)	1	010-505-021
Rack, 9 position, RackLock for <i>DigiPREP</i> MINI (50 ml)	1	010-510-021
Rack, 25 position, RackLock for <i>DigiPREP</i> MINI (15 ml)	1	010-510-023
Rack, 40 Position, RackLock for <i>DigiPREP</i> Jr (15 ml)	1	010-515-023
Rack, 32 Position, RackLock for HotBlock® (15 ml)	1	010-515-025
Rack, 54 Position, RackLock for <i>DigiPREP</i> MS (15 ml)	1	010-515-027
Autosampler Racks, for 50 ml <i>DigiTUBEs</i> , for Gilson & SPECTRO (12 position)	1	010-510-050
Autosampler Racks, for 50 ml <i>DigiTUBEs</i> , for CETAC (24 position)	1	010-510-051

### 16 mm Inserts

Acid resistant, Teflon® coated, Graphite Inserts are designed to fit into the 30 mm wells of *DigiPREP* Jr., MS, LS, h and MINI digestion blocks Inserts allow for micro-digestions of Hg, PO<sub>4</sub>, and Chemical Oxygen Demand (COD) using conventional 16 mm glass tubes.

Description	Qty	Catalog No.
Inserts for 50 ml wells to 16 mm round bottom tubes	6/pk	010-500-090
Inserts for 50 ml wells for flat bottom 15 ml tubes	6/pk	010-515-090



## DigiPREP HT HIGH TEMPERATURE DIGESTION SYSTEM

**DigiPREP HT** incorporates several state-of-the-art design features. Available in four models: **DigiPREP HT 100** with a capacity of 10 or 40 tubes; and **DigiPREP HT 250** with a capacity of 10 or 20 tubes. Each **DigiPREP HT** comes complete with a dual zone insert rack and Teflon® exhaust manifold. **DigiPREP HT** systems have a temperature range from ambient to 450 °C. Temperature uniformity is  $\pm 3$  °C at 400 °C.

Manufactured with a SiC coated graphite block to withstand corrosion from hot acid spills. Used with an all Teflon® manifold to promote refluxing and to manage waste fumes. The housing of the exhaust manifold and insert racks are triple Teflon® coated. Integrated two-tier, high rise system to cool samples after digestion.

**DigiPREP HT** is constructed with an all-Teflon® exhaust manifold system, which eliminates breakage typical with all-glass manifolds. The manifold's Teflon® tube adaptors "float" in each digestion tube eliminating sample loss while managing fumes when connected to a glass water jet (included) or with the optional Universal Fume Scrubber (See Accessories, page 44). The small "footprint" of each **DigiPREP HT** digestion system minimizes bench space requirements. All movement of components (manifold, tube rack) is up and down eliminating the need for additional bench space beside the instrument.



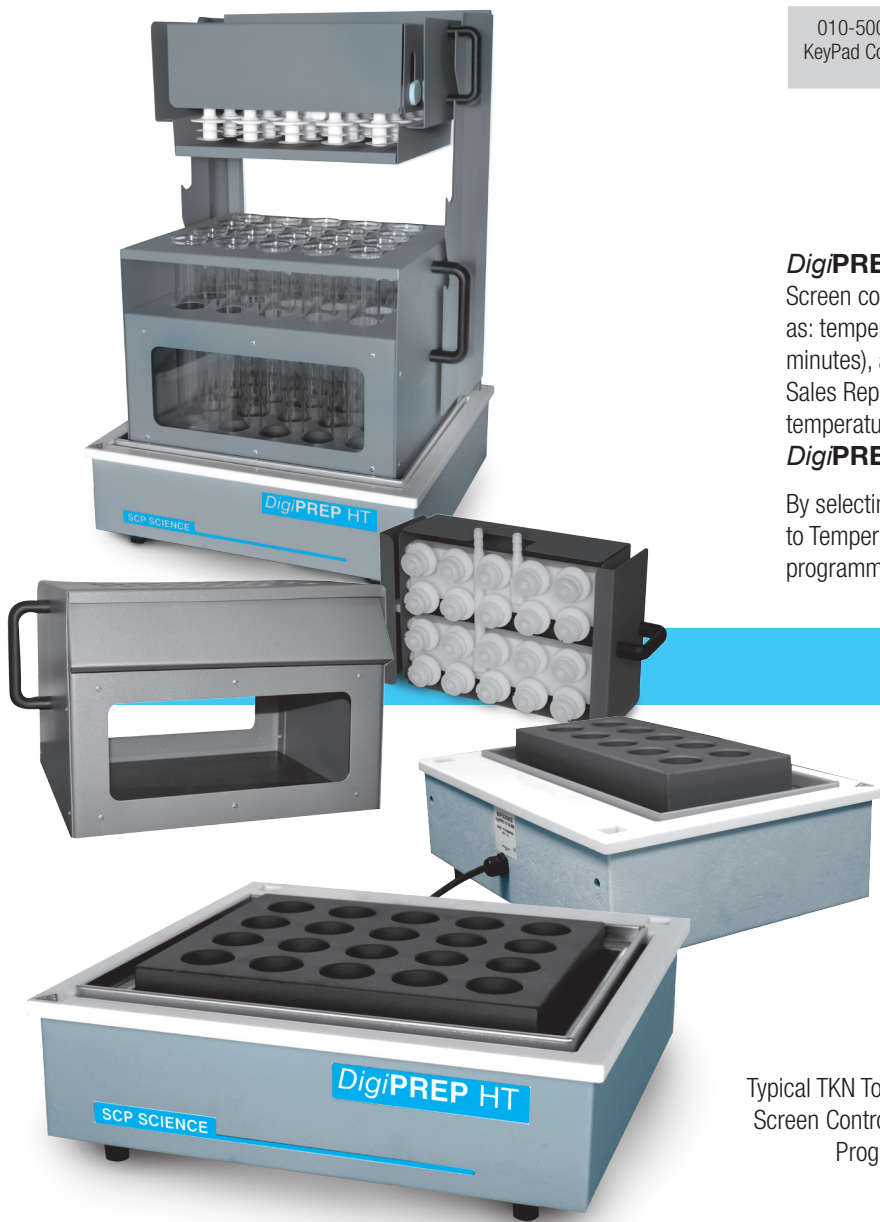
### SPECIFICATIONS

Description	DigiPREP HT 100-10	DigiPREP HT 100-40	DigiPREP HT 250-10	DigiPREP HT 250-20
Catalog Number	010-520-435	010-520-402	010-520-445	010-520-422
Capacity	10 -100 ml	40-100 ml	10 -250 ml	20-250 ml
Power	2530 Watt	1700 Watt	2530 Watt	1700 Watt
Size (in.)	17.75W x 12.5D x 27H	17W x 17.5D x 27H	17.75W x 12.5D x 27H	17W x 17.5D x 27H
Weight (lb/kg)	23 / 10.5	49 / 22	23 / 10.5	46 / 21

## DigiPREP HT HIGH TEMPERATURE DIGESTION SYSTEM

### Features

- Integrated dual temperature probes to validate block temperature
- Ambient to 450 °C
- Thick film heater covers 99% of the graphite block
- Works with all controllers



### Select a Controller (see pages 31-32 for more info)



010-500-220  
KeyPad Controller

010-500-250  
Touch Screen  
Controller

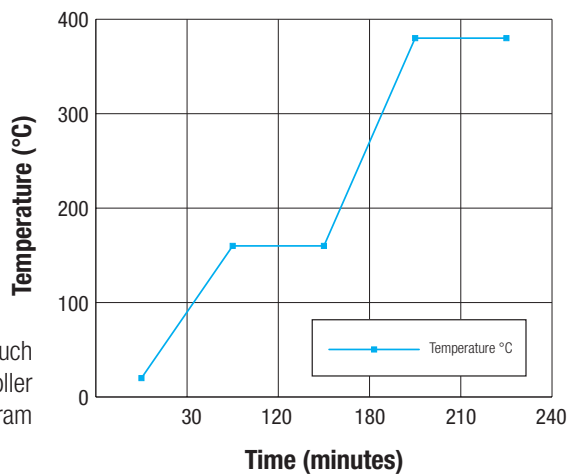
010-500-275  
Touch Screen  
Controller w/USB

010-500-280  
PC Classic  
Controller

Recommended

*DigiPREP* HT blocks operate with the KeyPad, PC Classic or Touch Screen controllers. All controllers have programmable options such as: temperature set-point to 0.1 °C, timer with shut off option (in minutes), and a calibration routine. Your **SCP SCIENCE** Technical Sales Representative or distributor trained in the applications of high temperature digestion systems, can suggest the right combination of *DigiPREP* HT and controller to fit your needs.

By selecting the the Touch Screen Controller up to 3 steps of 'Time to Temperature' and "Time at Temperature' methods can be programmed and stored. Ideal for Kjeldahl / TKN applications.



Typical TKN Touch Screen Controller Program

## DigiPREP HT HIGH TEMPERATURE DIGESTION SYSTEM

### ORDERING INFORMATION



System	Catalog Number	Qty	Component Description	System	Catalog Number	Qty	Component Description
<i>DigiPREP</i> HT 100-40 (230V) 010-520-402  Models for 100 ml digestion tubes	010-520-010	1	<i>DigiPREP</i> HT 100-40 Insert Rack	<i>DigiPREP</i> HT 100-10 (230V) 010-520-435	010-520-247	1	<i>DigiPREP</i> HT 100-10 insert rack
	010-520-100	1	Exhaust Manifold Rack, 100 ml		010-520-253	1	Teflon® Manifold HT 100-10
	010-520-205	1	<i>DigiPREP</i> HT 100 (230V) block with Hi-rise		010-520-300	1	Glass Water Jet
	010-520-300	1	Glass Water Jet		010-520-304	300 gr	Boiling stones
	010-520-304	300 gr	Boiling Stones				
<i>DigiPREP</i> HT 250-20 (230V) 010-520-422  Models for 250 ml digestion tubes	010-520-230	1	<i>DigiPREP</i> HT 250-20 Insert Rack	<i>DigiPREP</i> HT 250-10 (230V) 010-520-445	010-520-211	1	<i>DigiPREP</i> HT 250-10 insert rack
	010-520-225	1	<i>DigiPREP</i> HT 250 (230V) block with Hi-rise		010-520-215	1	Teflon® Manifold HT250-10
	010-520-250	1	Exhaust Manifold Rack, 250 ml		010-520-300	1	Glass water jet
	010-520-300	1	Glass Water Jet		010-520-304	300 gr	Boiling stones
	010-520-304	300 gr	Boiling Stones				

\* Custom tube calibrations available upon request.

### ACCESSORIES



Description	Qty	Catalog No.	Description	Qty	Catalog No.
HT 100 Digestion Tubes, uncalibrated	1	010-520-011	Ball Glass Condenser 100 ml	1	010-520-318
HT 100 Digestion Tubes, calibrated * at the 25 ml and 50 ml mark	1	010-520-111	HT 250 Digestion Tubes, uncalibrated	1	010-520-031
HT 100 Digestion Tubes, Quartz, uncalibrated	1	010-520-085	HT 250 Digestion Tubes, calibrated * at the 50 ml and 100 ml mark	1	010-520-131
Glass Water Jet, Extra	1	010-520-300	HT 250 Digestion Tubes, Quartz, uncalibrated	1	010-520-087
Boiling Stones, Extra	300 gr	010-520-304	Ball Glass Condenser 250 ml	1	010-520-312
			Heat deflector Shields for all racks	2	010-520-032



## DigiPREP HT UNIVERSAL FUME SCRUBBER ACCESSORY

The Universal Fume Scrubber is used to trap and neutralize fumes from the *DigiPREP* HT or from a *DigiPREP* MS with a *DigiVAC* Hood. Acid fumes travel through a series of bottles where the fumes are condensed, neutralized and scrubbed. An adapter is included to connect the system to either the HT Digestion manifold or the *DigiVAC* system.

### Specifications

Voltage	115-230V~1A
Certification	CE, UL and CSA approved



## DigiPREP CHILLER SYSTEM

Lightweight, CFC-free chiller for use with the *DigiPREP* Universal Fume Scrubber system (catalog no. 010-520-160). Provides excellent cooling capacity and reliability. Hot gas by-pass system provides a stable flow of coolant eliminating on/off cycling to extend compressor life span.



### Features

Compact size - Save valuable bench space



## ORDERING INFORMATION

Description	Qty	Catalog No.
Universal Scrubber System	1	010-520-160
Chiller System (Optional CFC free Chiller System Eliminates excessive water consumption to the condenser), 115V	1	010-520-072
Chiller System (Optional CFC free Chiller System Eliminates excessive water consumption to the condenser), 230V	1	010-520-074
Activated Charcoal (5 kg.) Replacement	1	010-520-165
Filters for Activated Charcoal (pk/12) Replacement	1	010-520-167

### Features

Environmentally Friendly  
Replaces the use of "water-jet" vacuum system  
Eliminates excessive water consumption



## SPECIFICATIONS

Catalog Number	010-520-072 (115V); 010-520-074 (230V)
Temperature Range	0 - 35 °C
Cooling Capacity	1000 W
Stability	± 0.3 °C
Flow Rate at 15 psi	4.5 L/min
Size (in./cm)	19.3W x 8.3D x 19.3H / 49W x 21.1D x 49H
Weight (lb/kg)	55/25
Certification	CE, CSA, UL



## DigiPREP FAST STEAM DISTILLATION SYSTEM

**DigiPREP** Fast Steam Distillation Systems distill samples for ammonia, TKN or alcohol in 3-5 minutes per sample. The **DigiPREP** line of distillation systems vary in automation as shown in the chart below. All models have automatic addition of NaOH, programmable reaction and distillation times and variable steam generating capacity. The addition of dilution water to the sample, addition of boric acid to the receiving flask, or the automatic waste

removal from the spent distillation tube (safety consideration), offer increased levels of automation. Canister sets with automatic level monitoring are available for all **DigiPREP** Distillation Systems. For advanced automation, **DigiPREP 500** comes with an onboard titration cell for the connection of a titrator which communicates with the distillation unit upon completion of the titration.

### ORDERING INFORMATION



Description	Qty	Catalog No.
<b>DigiPREP 100</b> Distillation System	1	010-035-001
<b>DigiPREP 200</b> Distillation System	1	010-035-002
<b>DigiPREP 300</b> Distillation System	1	010-035-003
<b>DigiPREP 400</b> Distillation System	1	010-035-004
<b>DigiPREP 500</b> Distillation System	1	010-035-005
Chiller System (115V) See page 44	1	010-520-072
Chiller System (230V) See page 44	1	010-520-074
Canister Set for <b>DigiPREP 100 &amp; 200</b>	1	010-035-200
Canister Set for <b>DigiPREP 300</b>	1	010-035-202
Canister Set for <b>DigiPREP 400 &amp; 500</b>	1	010-035-204
Titration Module for <b>DigiPREP 500</b>	1	010-035-050



### SPECIFICATIONS



	Model 100	Model 200	Model 300	Model 400	Model 500
Catalog Number	010-035-001	010-035-002	010-035-003	010-035-004	010-035-005
Automatic Addition of H <sub>2</sub> O	No	Yes	Yes	Yes	Yes
Automatic Addition of NaOH	Yes	Yes	Yes	Yes	Yes
Automatic Addition of H <sub>3</sub> BO <sub>3</sub>	No	No	No	Yes	Yes
Programmable Reaction Time	Yes	Yes	Yes	Yes	Yes
Programmable Distillation Time	Yes	Yes	Yes	Yes	Yes
Automatic Steam Generation	Yes	Yes	Yes	Yes	Yes
Variable Steam Generating capacity (40% -100%)	Yes	Yes	Yes	Yes	Yes
Automatic Removal of Sample Waste by Suction	No	No	Yes	Yes	Yes
Number of Programs	1	1	10	99	99

## DigiPREP

### FAST STEAM DISTILLATION SYSTEM



## SPECIFICATIONS

	Model 100	Model 200	Model 300	Model 400	Model 500
Display Language can be chosen by the User	Yes	Yes	Yes	Yes	Yes
Visual Error Reports	Yes	Yes	Yes	Yes	Yes
Acoustic Error Reports	Yes	Yes	Yes	Yes	Yes
Standby Operation Between Distillations	Yes	Yes	Yes	Yes	Yes
Level Monitoring for the Set of Canisters	Yes	Yes	Yes	Yes	Yes
Connection for Titration Unit	No	No	No	No	Yes
Voltage (volts)	230	230	230	230	230
Dimensions (W x H x D in mm)	410 x 675 x 410	410 x 675 x 410	410 x 675 x 410	410 x 675 x 410	410 x 675 x 410
Weight (kg)	34	34	35	35	36